



Hunterdon County
Safe Routes to School

Safe Routes to School TRAVEL PLAN 2011



Milford Public School

Milford Public School
7 Hillside Avenue
Milford, NJ 08848
Grades: K-8

Introduction

Milford Borough is 1.3 square miles and located along the Delaware River. Milford Public School is located on the corner of two county roads, County Route 519 and Route 619. There are sidewalks on several roads, but not on all. Crosswalks are present. Traffic volumes, speed, motorist awareness and truck traffic are all concerns.

In the 2010-2011 school year, Milford Public School has an enrollment of 115. About 30% of all students walk to school. Approximately 65% of students are dropped at the school by car and the remaining 5% bicycle to school.

Crossing Guards are provided at the south and west entrances to the school on Route 519.

Community Profile: Borough of Milford
Population: 1,196 (2007 estimation)
Area: 1.3 square miles
Police: NJ State Police

Members of the Working Group

- Mrs. Maggie Culley, Principal
- Mrs. Tara Sheperd, HART Executive Director
- Mr. John Stevenson, HART Bike and Pedestrian Programs Coordinator

Objectives of the Travel Plan

1. To make travel to and from Frenchtown Elementary School safer and more efficient.
2. To reduce traffic congestion around the school.
3. To encourage travel to school by means other than the car.
4. To encourage students to walk to school as a health option.
5. To incorporate travel safety, health and environmental information into the school day.
6. To educate students about safe walking and bicycling behaviors

Current School Policy

Milford Borough is a walking district. Children are permitted to bicycle to school. If they are seen bicycling without helmets, they are spoken to, and if the problem persists their parents are contacted.

Efforts to Date: Education and Encouragement

Milford Public School initiated a walking school bus program in 2008. The program currently attracts approximately 10 students for each walking day. There is one walking route from the residential area east on Route 519 to the school. Several walking days are held in the spring and fall. Frequent walker cards are utilized as part of the program, and incentive items are given to those who fill the cards.



Efforts to Date: Engineering and Enforcement

In 2008, Milford Borough received a \$300,000 SRTS grant to install a new sidewalk on Hillside Avenue and part of Valley View Avenue. This project is complete except for some fencing on either end of the sidewalk. A retaining wall was rebuilt below the sidewalk, and the completion of the fence is necessary to keep children safe. It was delayed due to winter weather.

Using SRTS grant money, HART purchased a "Speed Sentry" radar speed display sign. HART makes the sign available to Hunterdon County schools and municipalities, on loan, for periods of approximately one month. The sign displays the speeds of passing vehicles and can collect data on the number and speed of vehicles.



The purpose of the loaner program is to give schools and municipalities a tool to help slow traffic and an opportunity to verify speeding concerns with objective data.

Milford Borough borrowed the sign in November 2010 and placed it eastbound on Route 519, Milford-Mt. Pleasant Rd. HART analyzed the data and provided reports to the school and local police. The data collected showed that drivers approaching the south entry to the school from the west are largely compliant with the speed limit. The sign will be loaned again and placed at different locations near the school.

Milford Borough owns a speed feedback sign which they rotate to different locations throughout the town. The Borough does not currently review the recorded speed data, but HART has offered to provide this service.

Student Locations

Milford Public School provided HART with redacted student addresses for the 2010-2011 academic year. The addresses were grouped by street and into larger areas which are shown in the attached maps. This information assists in creating walking routes, as well as to help target enforcement efforts and identify any infrastructure improvements."



Current Challenges

There is parental concern about allowing children to walk and bicycle to the school due to the perceived dangers along County Routes 519 and 619. The principal, Maggie Culley, highlighted a specific location which may prevent students from walking. The 15 students who live on Williams Street, Dawn Road and Phyllus Lane could be much safer on a walk to school if the sidewalk along Milford-Mt. Pleasant Road extended around the bend. There is currently a guard rail on the downhill side of this bend and an embankment on the uphill side which leaves minimal space for walking.

Milford Borough is patrolled by the NJ State Police, which does not always allow for regular school-based enforcement.

Milford Public School has had some difficulty getting students to wear helmets when they bike or skate to school, even after contacting the parents individually.

Next Steps

The school and HART plan to hold a bike rodeo in late March 2011. The rodeo will include a helmet fitting, brain injury prevention demonstration, safety information and bike riding skills activities. The event will be held during the school day for Grades K-8.

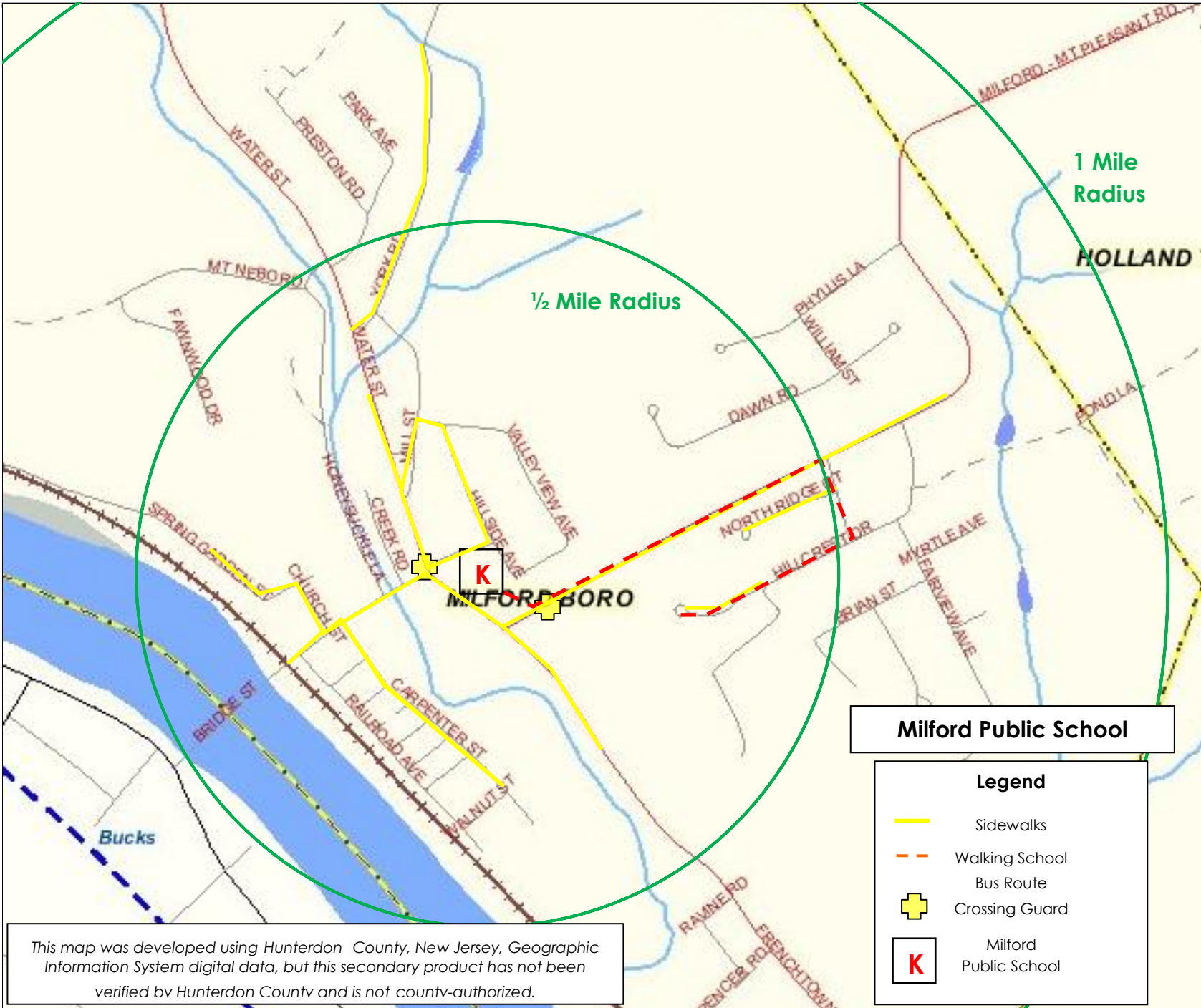
Milford Public School plans to conduct an after-school Walkability Audit in late May 2011. The Audit will involve students and help document pedestrian facilities and concerns near the school.

In order to expand the encouragement of walking beyond the walking school bus, pedometers will be provided to Milford Public School for use by the physical education department. The distance which students walk will be collected and publicized along with the health and environmental benefits of walking or biking.

Milford Public School will begin conducting Student Travel Tallies in spring 2011.

Proposed Actions

Education Actions	Responsibility	Timeframe	Cost
Bike Rodeo Grades K-8	School	Spring 2011	Low
Printing of educational materials	School	Spring 2011	Low
Public Awareness Campaign	School/ HART TMA	Fall 2011	Low
Encouragement Actions			
Distribute Pedometers and use distances to publicize benefits of walking	School	Spring 2011	Low
Participate in International Walk to School Day	School	Annual	Low
Enforcement Actions			
Speed enforcement	State Police	2011	Low
Stop for Pedestrians at crosswalks	State Police	2011	Low
Engineering Actions			
Installation of sidewalks on Hillside Avenue through SRTS funds	Municipality	Complete Fall 2010 except for railing	High
Evaluation Actions			
Travel Tally	School/HART TMA	Alternating Months	Low
Walkability Audit	School/HART TMA	May 2011	

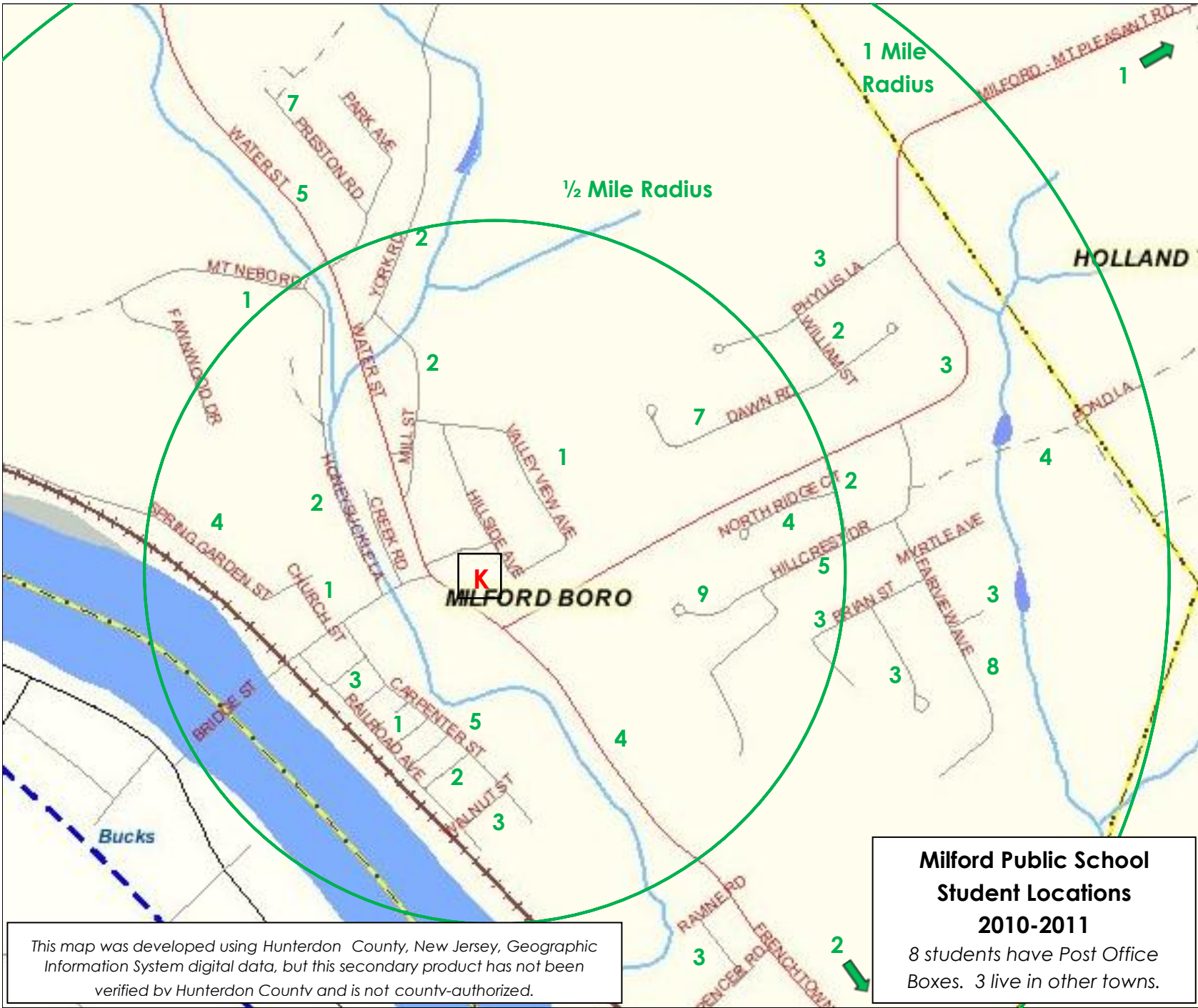


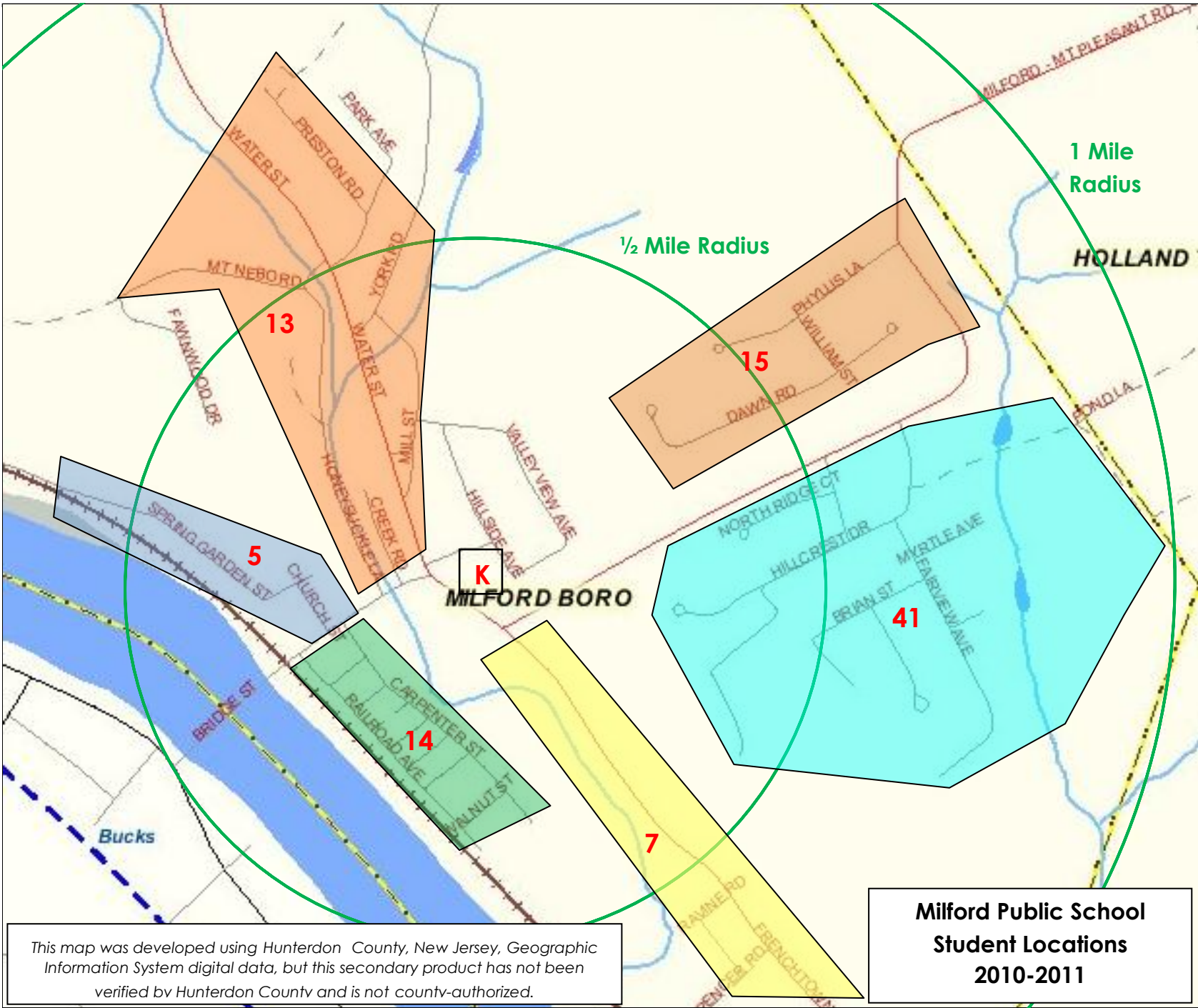
Milford Public School

Legend

- Sidewalks
- - - Walking School Bus Route
- + Crossing Guard
- K Milford Public School

This map was developed using Hunterdon County, New Jersey, Geographic Information System digital data, but this secondary product has not been verified by Hunterdon County and is not county-authorized.





This map was developed using Hunterdon County, New Jersey, Geographic Information System digital data, but this secondary product has not been verified by Hunterdon County and is not county-authorized.